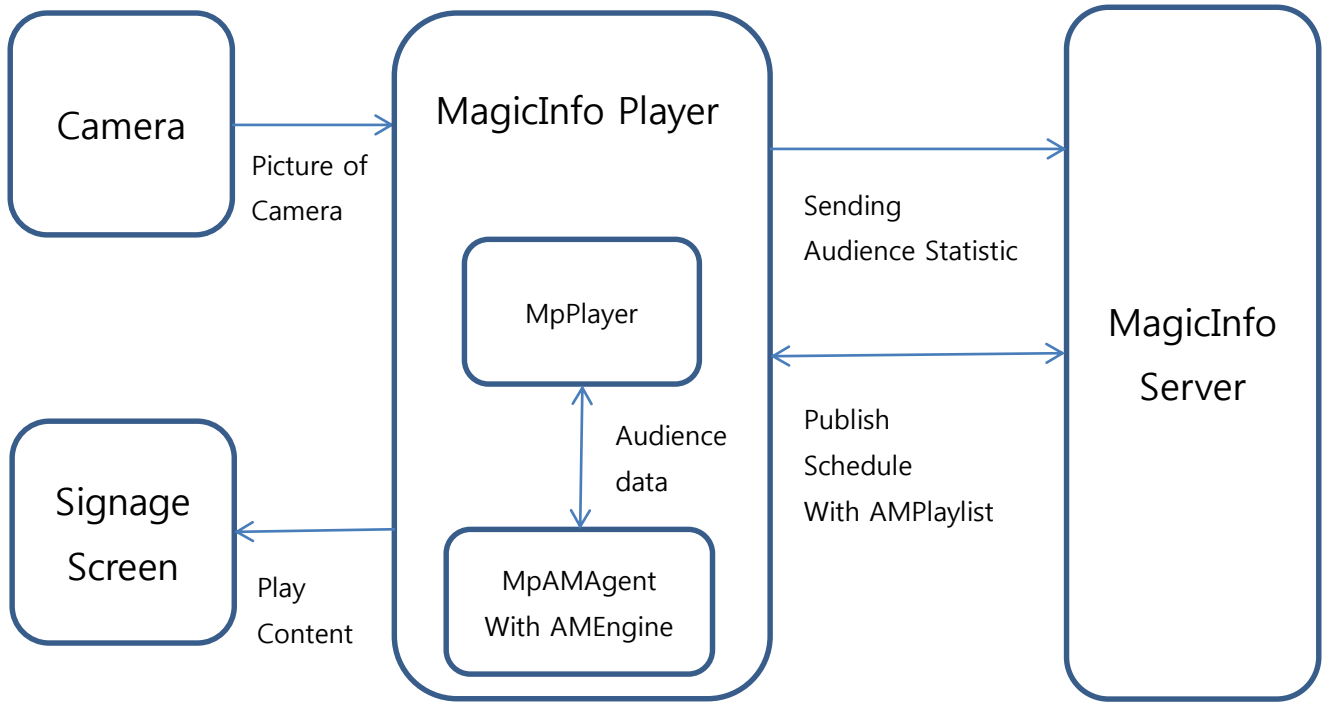


The Diagram of MagicInfo for AM



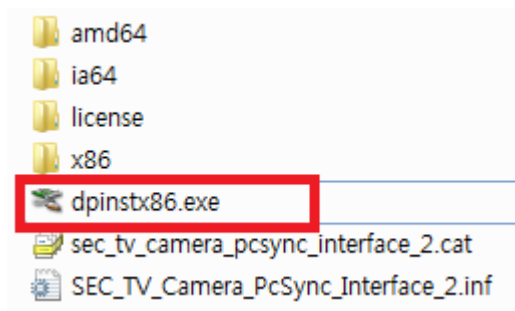
Installation Guide for MagicInfo Player I

1. Install USB CAM Driver

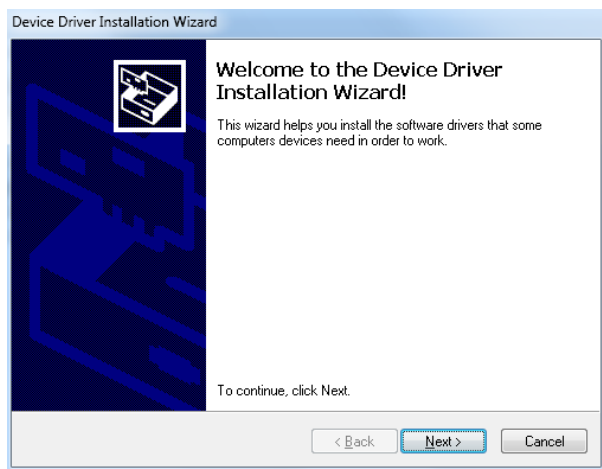
1.1 Connect USB CAM

1.2 Run driver installer

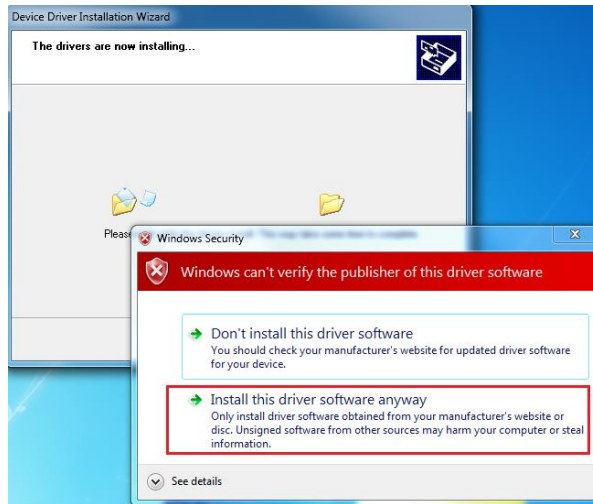
- 1) Run dpinstx86.exe



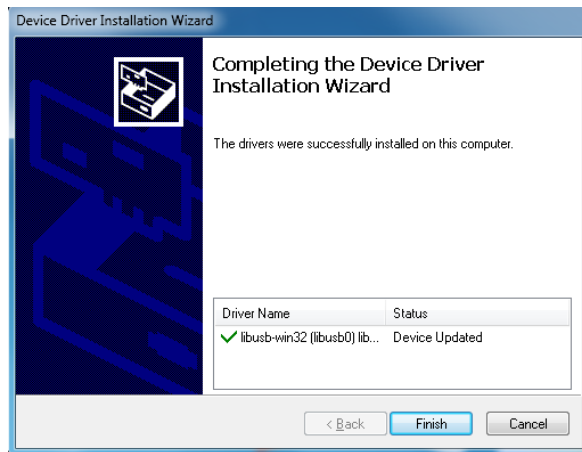
- 2) Select [Next]



- 3) Select [Install this driver software anyway]



4) Select [Finish]

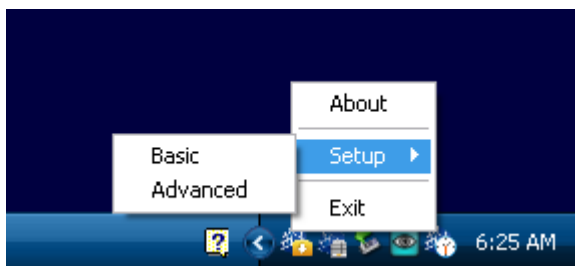


2. Install MagicInfo Player I Ver 3.1

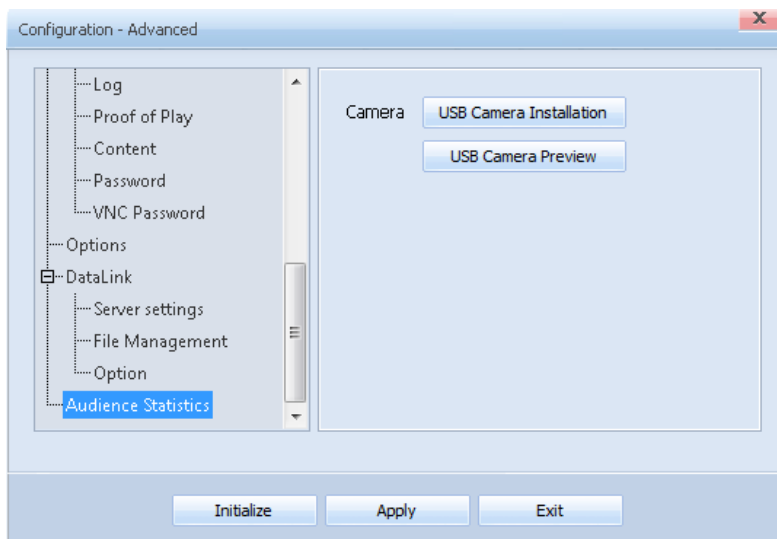
If old version of Player I has been installed, uninstall it first.

3. Setting MagicInfo Player I to use Audience Measurement

3.1 Run the MpWather -> Setup -> Advanced and Enter password(dafult:000000)



3.2 Select Audience Statistics in Advanced menu



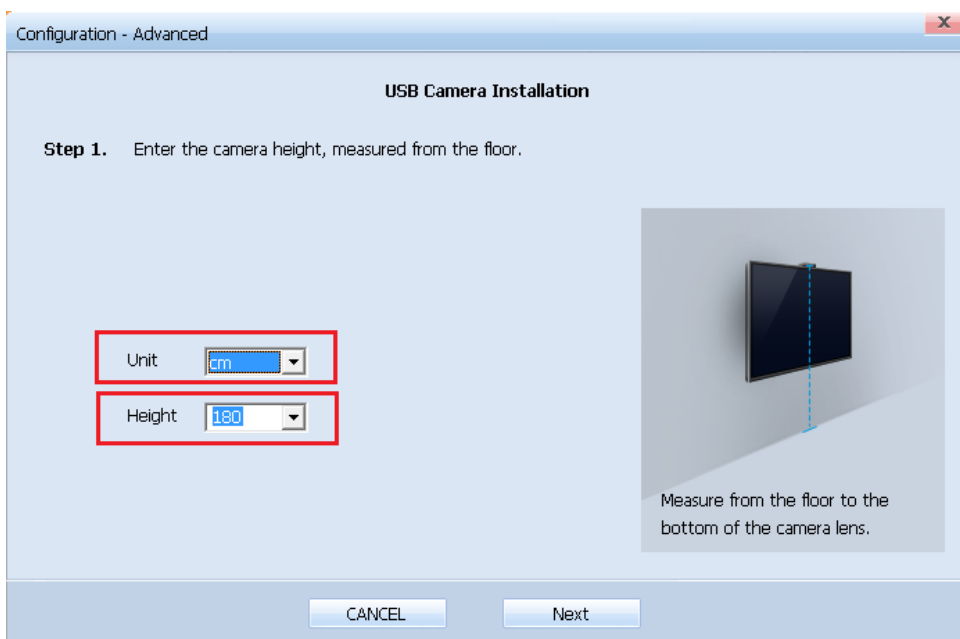
3.2 Setting USB Camera installation

Select USB Camera Installation in Audience Statistics

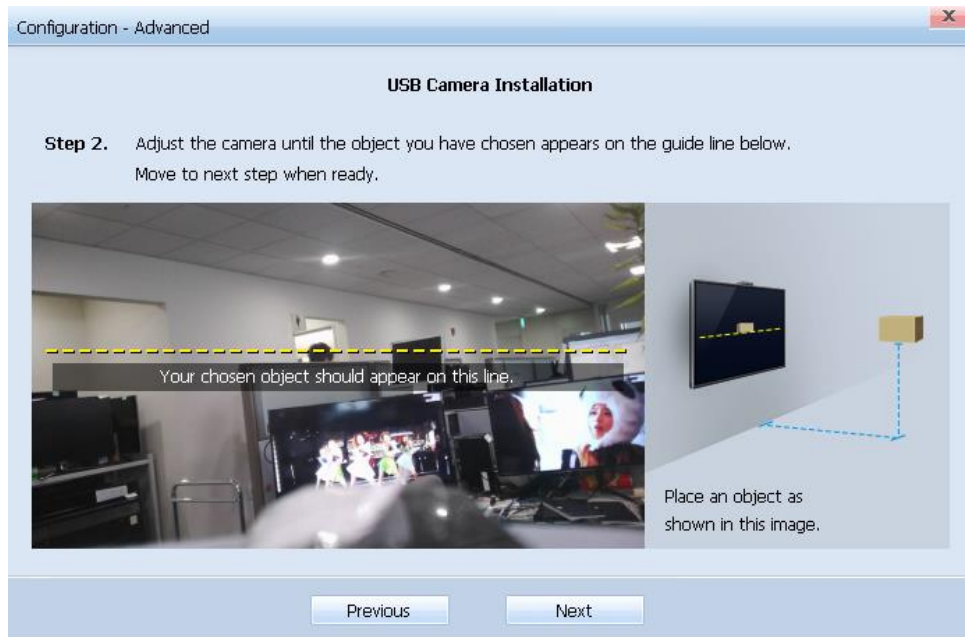
You can select option you want on each step.

The dialog of each Steps will show guide. Please follow the guide of each step

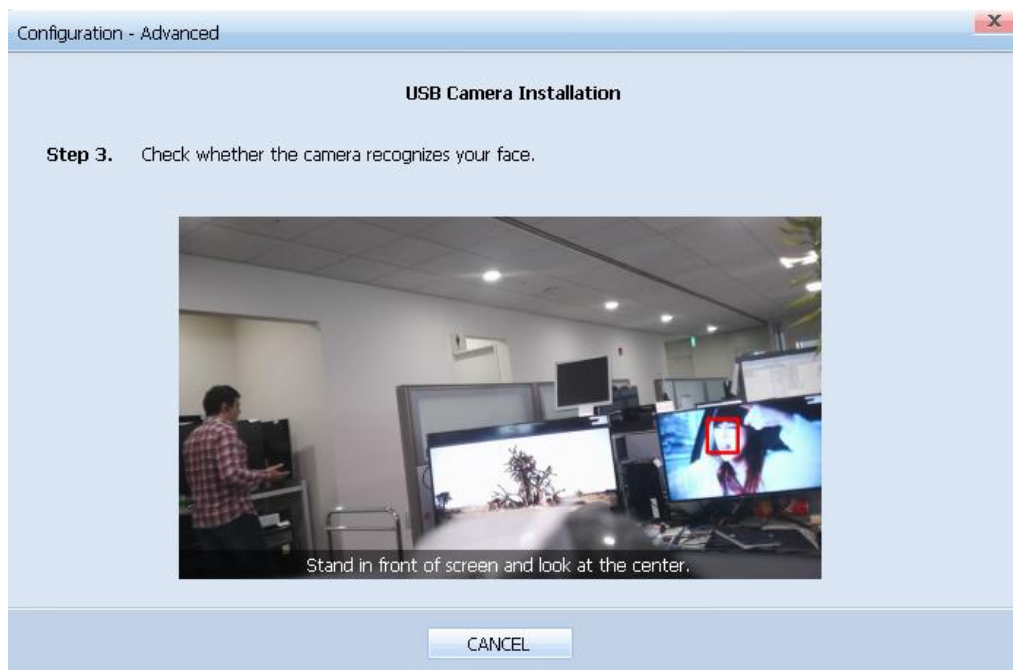
Step 1 : Select the Camera height.



Step 2 : Control angle of camera

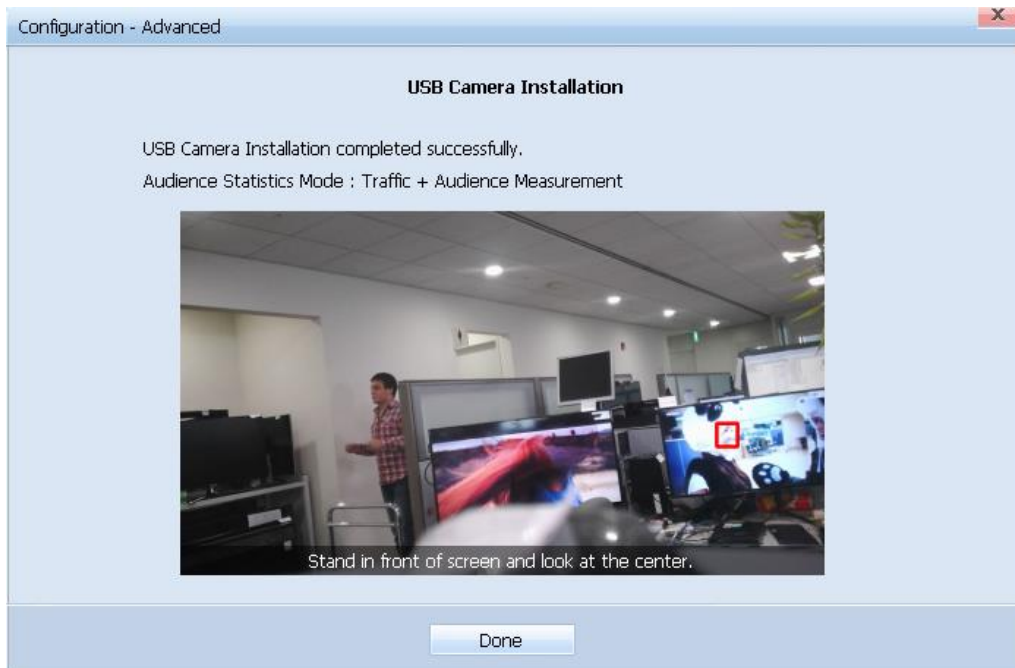


Step 3 : recognize your face in angle

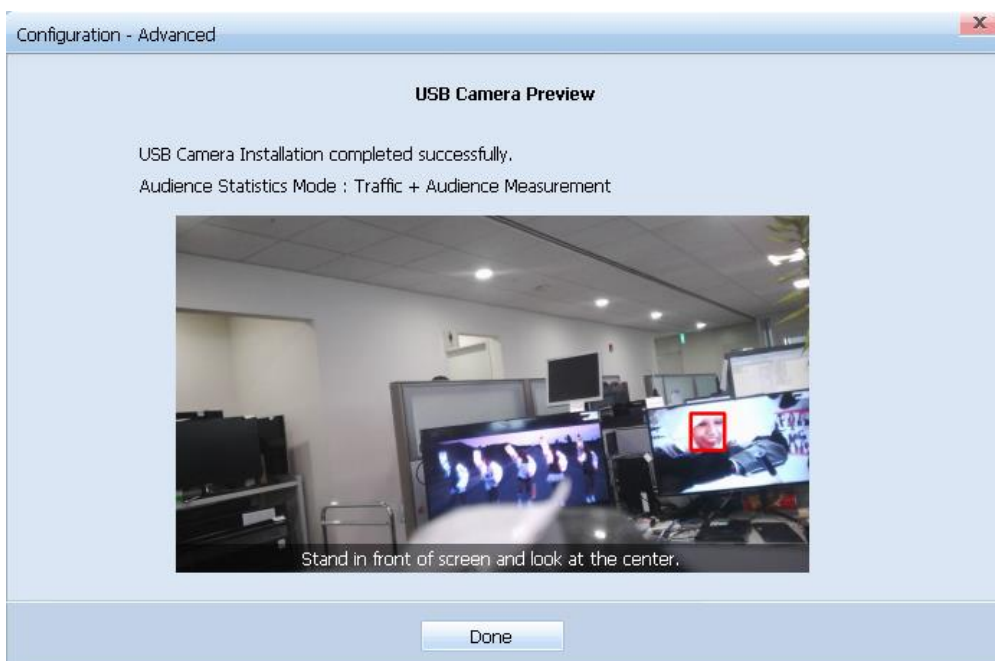


Step 4 : if camera recognize face in angle, installation complete successfully.

If not, you can re-try again.



And, if you want to see preview, run USB Camera preview.



4. Connect MagicInfo Server

Setting MagicInfo Server IP or Address in Advanced menu.